
BOBCAT WAG-SEPT. 12-16

MONDAY, SEPT. 12

Students return to same class as last week

Students will move to new classrooms for the 2022-2023 year

Pickup? Please read details below.

Kindergarten students follow gradual entry schedule--Groups A and B



TUESDAY, SEPT. 13

All students attend 8:45am-9:45am

Students head to their NEW classroom



Kindergarten students follow gradual entry schedule--Groups A and B



WEDNESDAY, SEPT. 14



THURSDAY, SEPT. 15

FRIDAY, SEPT. 16



The following week:

Monday, September 19--Cross Country starts this week--open to Grades 1-7. Details to come later this week.

- Breakfast Club starts--8:00am in the gym

Tuesday, September 20--

Wednesday, September 21--

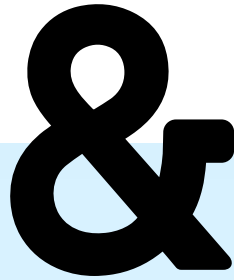
Thursday, September 22--"Meet the Teacher" @ 5:30pm-6:30pm--IN PERSON @ Blundell

Friday, September 23—Professional Day-Students do not attend

Bell schedule 2022-2023



8:45am--Bell-Morning instruction begins
10:45am-Recess (15 minutes)
12:00pm-Lunch--Outside--play time
12:30pm--Lunch--Inside--eating time
12:50pm--Afternoon instruction begins
2:45pm--Dismissal



Students will enter/exit their classroom from the external door

Div. 2 enters at the main school doors--please line up on the side towards the parking lot

Div. 3 enters the main school doors--please line up on the side towards the sunflower garden

PARENT INFORMATION

IMPORTANT

 **MONDAY, SEPT. 12
PICK UP**

PLEASE READ CAREFULLY!

- Rolling boards will be outside with a list posted alphabetically, by last name showing students and their division.
- One rolling board by gym and one rolling board by the out of school care.
- Find your child's name and Div. #.
- Then find Teacher name/Div. number on a master list that will show the room number
- Look to the map showing where to pick up.
- External doors will have the teacher's name and division number on it



First week done!

Thank you to all of our families, students and staff for making this first week back go so smoothly. It was wonderful to see the many new faces at Blundell and to welcome back our returning students—most of whom have grown so much. Students will move into their new classes for the school year on Monday. Students and staff are excited to settle into our newer routines, keeping our health and safety needs at the front of our minds and also being happy to settle a bit more into some older and familiar ways of being at school. We look forward to getting know about our students and families over the school year.

Parking lot

As students are dropped off and picked up at the outside doors to their classroom, this has reduced the amount of traffic in our parking lot. Important reminders to keep us all safe:

- PLEASE DO NOT PARK in the drop off and pick up zones or in the spaces closest to the exit.
- Never leave your car UNLESS you are parked in a parking spot
- Right hand turns ONLY onto Blundell at the beginning and end of the school day.
- Be thoughtful of others and keep everyone's needs in mind.

Thank you for helping to keep our community safe.



PAC

PARENT ADVISORY COUNCIL

A reminder that Blundell has a PAC and would love to have more parents join us. The PAC does fundraising for the school, supports the school by providing classrooms with supplies in addition to the basic school supplies and support field trips throughout the year. Most importantly—for some—they take care of Hot Lunch Days! Information will be coming soon about our September meeting.

VISITORS TO BLUNDELL

We are excited to welcome visitors back to Blundell. Visitors are asked to follow the same health and safety protocols as our staff and students.

- Please check in at the office and get a visitor's badge.
- If you are ill, please stay home.
- Masks are optional inside the school.
- Where possible, please call ahead to make an appointment. The office phone number is 604-668-6562.