

BOBCAT WAG- DEC. 12-16



PAC Family Skate Night
come join us at Minoru
for a FREE skate with
your family!



MONDAY, DEC. 12

FOOD DRIVE BY DIV. 4
Bring your canned or boxed
non-perishable goods to
Blundell. CASH is also
welcome as Dvi. 4 collects
for the Richmond Food Bank!

TUESDAY, DEC. 13

Band concert @ 1:30pm--note the later start
Come and join us our band students perform
live!

PAC--Special treat for
each student!



WEDNESDAY, DEC. 14

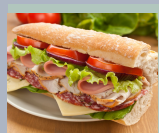
A special treat from our amazing out of
school care team! Look for it this week!

THURSDAY, DEC. 15



Kindergarten
hearing and vision screening @ 9am

Breakfast Club @ 8:00am



PAC Hot Lunch
SUBWAY

FRIDAY, DEC. 16



PJ DAY--wear your jammies and bring a
stuffy!

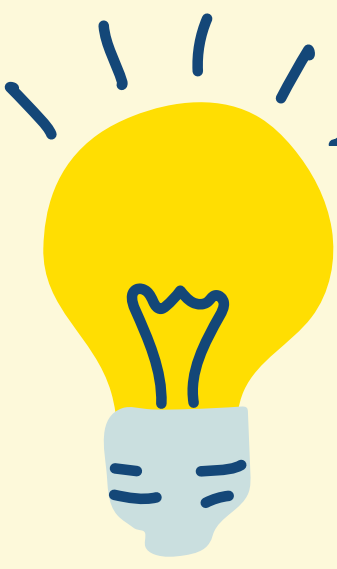
Monday, Jan. 2--New Year's Day Holiday--No School

Tuesday, Jan. 3--School reopens! Yeah!

Wednesday, Jan. 4-

Thursday, Jan. 5--

Friday, Jan. 6--PAC Hot Lunch



DEC 9-16, 2022

UPDATES FROM THE PAC



FREE SKATE NIGHT

All Blundell families are welcome to join us:
Monday Dec 12 4:30 - 6:00pm
at Minoru Arenas (7551 Minoru Gate, Richmond)
SEE THE NEXT PAGE FOR MORE DETAILS!



PAC SNACK SHOP

Students are loving the PAC Snack Shop! The Snack Shop is open every Friday during Hot Lunch and offers new snacks and juice boxes for \$1. The last one scheduled for this year is **Dec 16 - (Subway sandwich day)**



THANKS VOLUNTEERS!

A BIG THANK YOU to all the parents who continue to come out every Friday to support our Hot Lunches. We appreciate every slice of pizza and juice box you help hand out. Your kids love it too!



JANUARY HOT LUNCH

Look forward to your invitation to order hot lunch for January in your inbox soon! We are excited to offer you Hot Lunches every Friday in January! Questions or feedback? Please email and let us know!



PAC MEETING

The next PAC Meeting is **Friday Jan 13 at 1:15pm** in the library. Everyone is welcome to join! See you in the New Year!



blundell.elementary.pac@gmail.com
blundell.elementary.pac@gmail.com



MYED

PARENT PORTAL

We are excited to support the MyEducation BC (MyED BC) Parent Portal which provides parents with a way to access their child's school information directly online.

With this portal account, you will be able to view attendance, terms grades, and other information about your child(ren). The MyEducation BC application is a secure portal used in all school districts across the province of BC.

This week parents will receive an email with their login ID and a temporary password to access their account at <https://www.myeducation.gov.bc.ca/aspen/logon.do>.

For details please refer to the Parent Portal Letter— (please see attached below and emailed home on Nov. 29, 2022). For user instructions please refer to the the attachments below for directions on how to login, navigate and use the Parent Portal (<https://www.myeducation.gov.bc.ca/aspen/logon.do>).

Account problems?

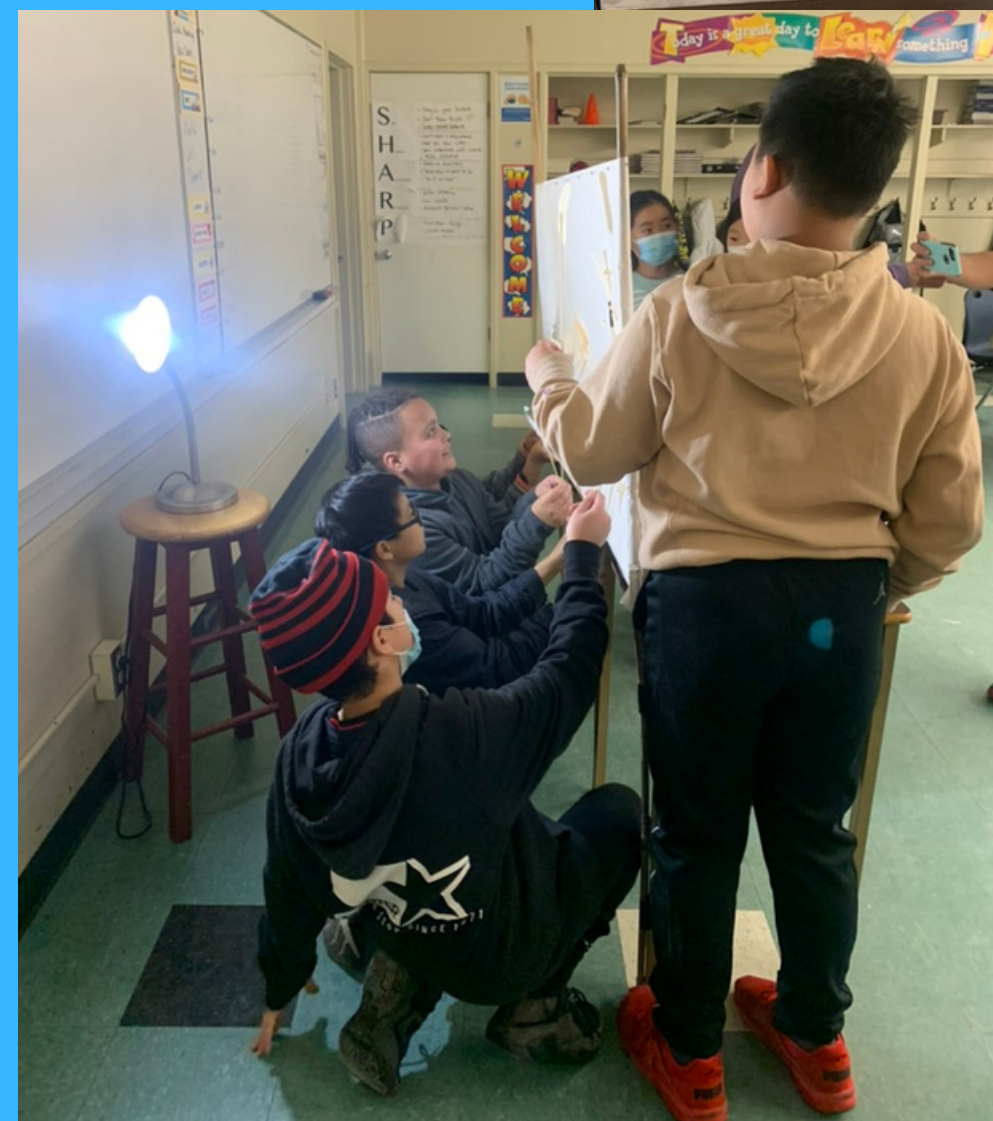
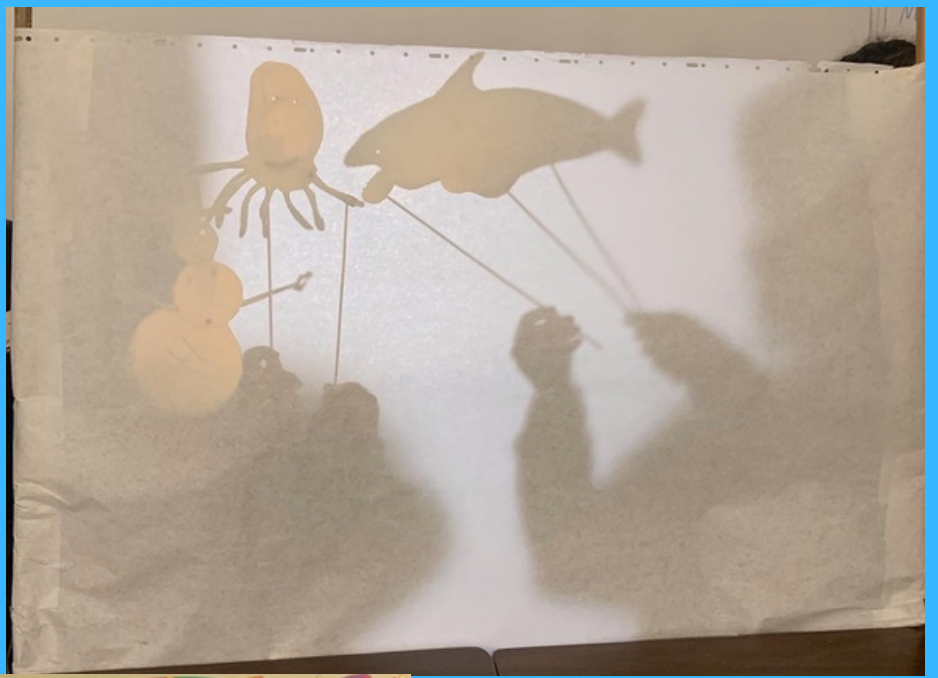
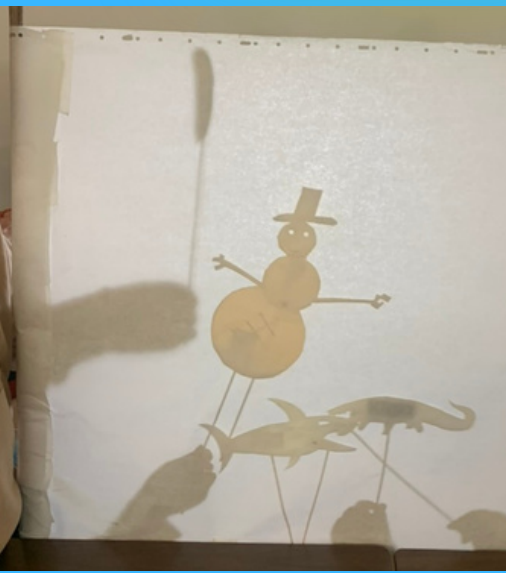
Please contact the Parent Portal Support Team by sending an email to MyEdParentPortal@sd38.bc.ca. In the subject line please put Parent Portal, and in the message include the following: School Name, Login ID, Student name, Parent/Guardian name and a brief description of the account issue.

LEARNING UPDATES-- -REPORT CARDS

Today your child's second learning update--written--report card has been posted in MyED. Families received information earlier this week and see above about how to login to MyED. This is our first time posting the report cards digitally via MyED for parents to view.

If you have any challenges logging in or accessing your child's report card, please contact as shared above.

SHADOW PUPPETS



To Richmond Baptist Church--our next door neighbour!

They support our community by:

- Hampers for the holidays
- Care packages for the holidays
- Backpacks and school supplies for our students
- Volunteers cooking for our breakfast club
- Organizing food for our breakfast club

We appreciate all that you do for our community!

HALLWAY HAPPENINGS



Division 6
Reindeer



Division 4-Fall leaves



Division 9-Snowmen



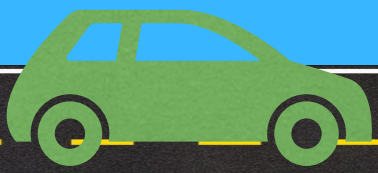
Division 7--Starry Night

Understanding the

PROFICIENCY SCALE

THE LEARNING JOURNEY TAKES TIME AND PATIENCE

For each individual student, learning moves through various stages. The goal is the same; there is a particular skill or understanding that needs to be learned and demonstrated. However, the time it takes for students to reach their destination and the route they take to get there varies. The proficiency scale is a way for teachers, students and parents to understand where each student is on their learning journey and what they need to work on to move towards proficiency. The following examples are adapted from our work with Canadian Assessment Educator, Katie White, who describes these stages of learning in the context of learning to drive.



EMERGING

When learners are emerging, they are in the process of building their readiness to learn. This includes elements such as becoming familiar with language, background context or foundational skills.

When we are learning to drive, before we get behind the wheel, we need to learn what the street signs mean, the basic rules of the road and what all the parts of the car do. We need a solid foundation before we move onto practicing the skill we're learning and move to being supported.

DEVELOPING

When learners are developing, they are working with others to improve their skill and understanding. This is where students spend most of their time, practicing, refining, making wrong turns and correcting their processes and thinking.

This is when we actually turn on the car and try driving. We need opportunities with someone to guide us where we might need support and further practice with the process. It is this practice with a more experienced driver that allows us to move towards proficiency.

PROFICIENT

PROFICIENT

When learners are proficient, they are able to demonstrate the skills they have learned independently and with confidence. Students should be able to show their proficiency in a number of ways.

Drivers demonstrate their proficiency by passing their driving test. Once they show that they have the skill to drive independently, they no longer need someone in the car with them; they can continue to develop their comfort and enjoyment independently.

EXTENDING

EXTENDING

When learners are extending, they are free to explore the larger applications and possibilities of their learning. As they develop deeper understanding, they have more opportunities to make thoughtful connections and to innovate.

Once drivers are extending, they can try their hand at many new experiences. They can drive different sorts of vehicles and explore different terrain and weather. Their proficiency in the skill of driving allows them to explore the world in ways they previously weren't able to.

Proficiency Scale	→			
	Emerging	Developing	Proficient	Extending
	The student demonstrates an initial understanding of the concepts and competencies relevant to the expected learning.	The student demonstrates a partial understanding of the concepts and competencies relevant to the expected learning.	The student demonstrates a complete understanding of the concepts and competencies relevant to the expected learning.	The student demonstrates a sophisticated understanding of the concepts and competencies relevant to the expected learning.



Hanukkah December 18th-26th

The eight-day Jewish celebration known as Hanukkah or Chanukah commemorates the rededication during the second century B.C. of the Second Temple in Jerusalem, where according to legend Jews had risen up against their Greek-Syrian oppressors in the Maccabean Revolt.