

Blundell Elementary School

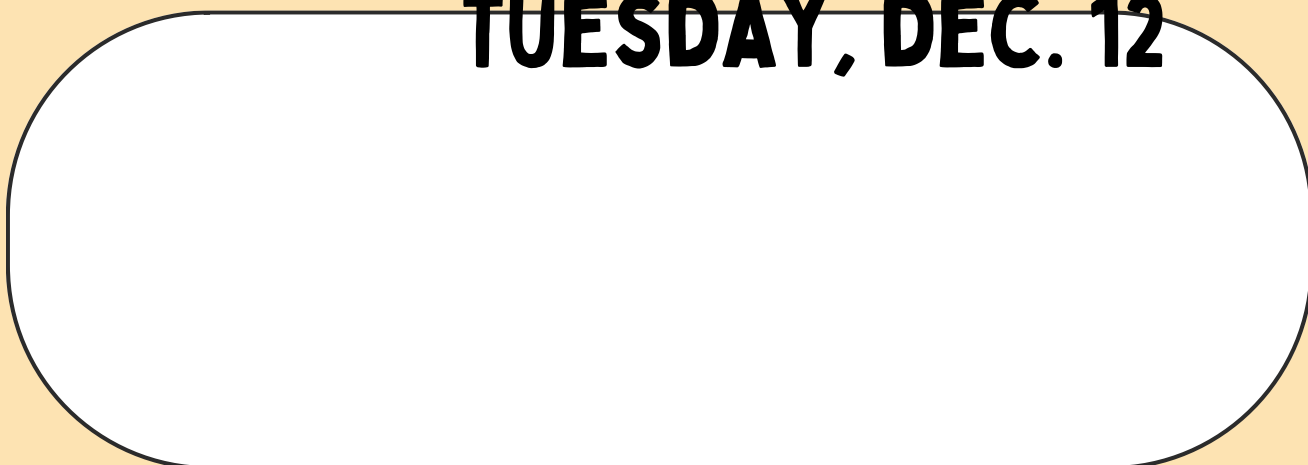
BOBCAT WAG

DECEMBER 11-15

MONDAY, DEC. 11



TUESDAY, DEC. 12



WEDNESDAY, DEC. 13

**SPIRIT
DAY**

dress up day

IDEAS: fancy clothes,
matching outfits,
appropriate costumes

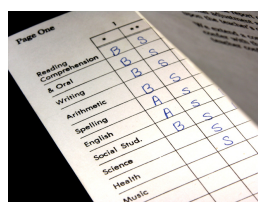
THURSDAY, DEC. 14

Breakfast
Club @ 8am
in the gym



PAC HOT

LUNCH--Sushi



Learning Updates
Published
@ 2:30pm

FRIDAY, DEC. 15



Band
concert@
1:15pm

Families and friends come
and join us!

UPCOMING DATES...

Monday, December 18--A possible surprise?!

Tuesday, December 19-

Wednesday, December 20-PJ and bring a stuffy day!

Thursday, December 21-Breakfast club at 8am

Friday, December 22--Last day of classes before winter
break

PAC Hot lunch--Pasta



UPDATES FROM THE PAC

BLUNDELL SKATE NIGHT

You are invited to:
Blundell's Annual Skate Night
Monday, Dec 18
4:30 - 6 PM at Minoru Arena
Free for Blundell students, staff, and families



Blundell Skate Night is open to the entire Blundell community and includes:

- FREE ADMISSION, SKATE RENTALS & HELMETS RENTALS!
- Children's seal skate aids to help support anyone who needs help skating

FREE TREATS

(while supplies last)

FREE HOT CHOCOLATE

(bring a mug to help reduce waste!)



PLUS MORE!!

- Temporary tattoo station
- Raffle draws
- A SURPRISE visit from a SPECIAL GUEST!



LUNCH REMINDERS



These are the upcoming hot lunches:

Friday, Dec 15 - Sushi

Friday, Dec 22 - Pasta

PLEASE: Send a **PLATE** or **CONTAINER** on Pizza Day to help your child carry their pizza
Send a **FORK** on other days to reduce waste!

THANK YOU VOLUNTEERS

NEXT PAC MEETING IS: Friday, January 12, 2024 at 1PM in the library (following hot lunch). Note that the Dec 15 meeting was rescheduled. We hope to see you in new year!



CONTACT THE PAC

blundell.elementary.pac@gmail.com

LINK TREE

<https://linktr.ee/blundell.elementary.pac>

LOST AND FOUND



Located just past the office on a table.

Picture from Friday, Dec. 1.

The lost and found will be cleaned out each term. Please come by and take a peek if one of the items looks like yours!

Items not picked up by Friday, Dec. 22 will be donated to charity. Thank you!

SPIRIT DAYS

WHAT WILL YOU WEAR?

DECEMBER SPIRIT DAYS!

Wednesdays

december 6 backwards day wear your clothes backwards	december 13 dress up day IDEAS: fancy clothes, matching outfits, appropriate costumes	december 20 pj and movie day Roll out of bed and come in your pajamas
---	---	---

this week

The graphic features a white background with a green border. It includes illustrations of an elf, Santa Claus, and a reindeer. The date December 13 is highlighted with a yellow border, and the text 'this week' is written in blue cursive below it.

LEARNING UPDATES

We are excited to continue with the MyEducation BC (MyED BC) Parent Portal which provides parents with a way to access their child's school information directly online.

With this portal account, you will be able to view attendance, terms grades, and other information about your child(ren). The MyEducation BC application is a secure portal used in all school districts across the province of BC.

Earlier this year, parents received an email with their login ID and a temporary password to access their account at <https://www.myeducation.gov.bc.ca/aspen/logon.do>.

For user instructions please refer to the the attachments below for directions on how to login, navigate and use the Parent Portal (<https://www.myeducation.gov.bc.ca/aspen/logon.do>).

Account problems?

Please contact the Parent Portal Support Team by sending an email to MyEdParentPortal@sd38.bc.ca. In the subject line please put Parent Portal, and in the message include the following: School Name, Login ID, Student name, Parent/Guardian name and a brief description of the account issue. OR

Contact Ms. Kwok in the office!

DIV. 7

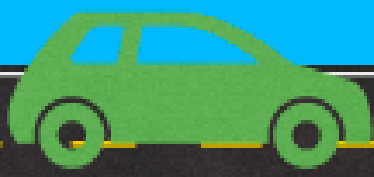


Learning Updates--

Understanding the PROFICIENCY SCALE

THE LEARNING JOURNEY TAKES TIME AND PATIENCE

For each individual student, learning moves through various stages. The goal is the same; there is a particular skill or understanding that needs to be learned and demonstrated. However, the time it takes for students to reach their destination and the route they take to get there varies. The proficiency scale is a way for teachers, students and parents to understand where each student is on their learning journey and what they need to work on to move towards proficiency. The following examples are adapted from our work with Canadian Assessment Educator, Katie White, who describes these stages of learning in the context of learning to drive.



EMERGING

When learners are emerging, they are in the process of building their readiness to learn. This includes elements such as becoming familiar with language, background context or foundational skills.

When we are learning to drive, before we get behind the wheel, we need to learn what the street signs mean, the basic rules of the road and what all the parts of the car do. We need a solid foundation before we move onto practicing the skill we're learning and move to being supported.

DEVELOPING

When learners are developing, they are working with others to improve their skill and understanding. This is where students spend most of their time, practicing, refining, making wrong turns and correcting their processes and thinking.

This is when we actually turn on the car and try driving. We need opportunities with someone to guide us where we might need support and further practice with the process. It is this practice with a more experienced driver that allows us to move towards proficiency.

PROFICIENT

When learners are proficient, they are able to demonstrate the skills they have learned independently and with confidence. Students should be able to show their proficiency in a number of ways.

Drivers demonstrate their proficiency by passing their driving test. Once they show that they have the skill to drive independently, they no longer need someone in the car with them; they can continue to develop their comfort and enjoyment independently.

EXTENDING

EXTENDING

When learners are extending, they are free to explore the larger applications and possibilities of their learning. As they develop deeper understanding, they have more opportunities to make thoughtful connections and to innovate.

Once drivers are extending, they can try their hand at many new experiences. They can drive different sorts of vehicles and explore different terrain and weather. Their proficiency in the skill of driving allows them to explore the world in ways they previously weren't able to.



Proficiency Scale	Emerging	Developing	Proficient	Extending
	The student demonstrates an initial understanding of the concepts and competencies relevant to the expected learning.	The student demonstrates a partial understanding of the concepts and competencies relevant to the expected learning.	The student demonstrates a complete understanding of the concepts and competencies relevant to the expected learning.	The student demonstrates a sophisticated understanding of the concepts and competencies relevant to the expected learning.

SCHOOL MESSENGER

HERE TO CONNECT...

RICHMOND
SCHOOL DISTRICT NO. 38

Richmond School District
7811 Granville Avenue, Richmond BC V6Y3E3
604-668-6000 | sd38.bc.ca

November 15, 2023

Dear Parent/Guardian,

The Richmond School District is implementing a new communication tool that will enable both the district and your child's school to send you text messages. This is being implemented to improve the ability to deliver time-sensitive information to you, including emergency notifications. Given the significance of this communication tool, we strongly encourage you to opt-in for this service. You can choose to opt-in by texting 978338 with a Yes. Please complete this action before November 30, 2023.

To opt-in, please send a text message with a Y or YES to 978338

An email was received
yesterday.
You must text 978338 to
OPT in.



Once you have opted in, you should receive a confirmation text message from School Messenger. School Messenger is fully compliant with the Student Privacy Pledge, ensuring the safety and confidentiality of your information. Your data will never be shared or sold to any third party.

Thank you for staying connected with us through this new communication tool.

RICHMOND
SCHOOL DISTRICT NO. 38

Richmond School District
7811 Granville Avenue, Richmond BC V6Y3E3
604-668-6000 | sd38.bc.ca

Frequently Asked Questions

How do I "opt-in" to receive text messages?

- Ensure your child's school has your cell number listed within MyEducation BC.
- Text Y to 978338 from each wireless device you wish to receive texts on.

How do I "opt-out" of receiving text messages?

- Recipients not wishing to receive text messages to a particular number can simply do one of the following:
 - Do not opt-in and do not reply to the opt-in invitation message.
 - Text STOP to 978338 at any time.
 - Opt-out online at <http://schoolmessenger.com/txtmsg>.

I "opted-in", but I am not receiving texts?

- Ensure that your child's school has your correct cell phone number in the MyEducation BC Student Information System. It may take 24 hours for a number to become active after being changed or added.
- Send a text with Y, from that specific device to 978338. You should receive an opt-in confirmation message from the service.
- To receive texts on multiple devices, each device number must complete the opt-in process.

Will I be charged for the text messages I receive?

- School Messenger does not charge recipients for text messages they receive or send, if using a Canada-based phone number; however, wireless providers may charge for individual text messages, depending on the plan associated with the wireless device. Please consult your carrier if you are uncertain if you have a text messaging plan.